

Electro Poles Products Pvt. Ltd.(EPPPL) was incorporated in the year 2007. We are basically ISO 9001:2008 Certified company & our factory is based in Dankuni, Dist-Hooghly near Mother Dairy Gate No 3 (Blue Heaven Hotel) based in Eastern India. We have professional & experience workers working with us since inception of the company. Our factory is mostly modernised & we have state of art equipments & machineries for execution of the products. We also have a highly quality control procedure within the factory.

You can depend on EPPPL's high quality Galvanized Steel poles for an appealing solution to your roadways & Street lighting needs. We offer Octagonal/ Polygonal shaped tapered Poles, Decorative brackets & accessories. Refer overleaf for the standard product range & specification. EPPPL also supplies galvanized & powder coated poles and brackets for decorative appearance & aesthetics.

Meeting the needs of you , our customer is top priority no matter how large or small your order whether its a standard product or specifically designed to meet your requirements our focus is to provide a quality product on time and per agreed standards.

We are reliable partner for your lighting needs.

We also supply :

- Customize / Decorative Lighting Poles/Brackets
- High Masts for area illumination
- Sports Lighting Poles/ Stadium Masts
- Monopoles / Transmission Poles
- Steel Tubular Poles
- Octagonal Poles



ELECTRO
Energizing nation with power



Registered Office:1-B, Ramlochan Mullick Street ,1st Floor, Room No. 105, Kolkata - 700073,

Marketing Office:Eco Suite Tower, Plot II - D/22, Action Area II, 6th Floor ,Suite No : 607,
(Near City Centre II) , Kolkata - 700156,West Bengal, India .

Factory : Dankuni, Dist-Hooghly , near Mother Dairy Gate No 3 (Blue Heaven Hotel) .

Phone No : +919874245900 ,

Email : info@electrogroups.com

Web : www.electrosteelproducts.com

Trade Enquiry No : +919831062522

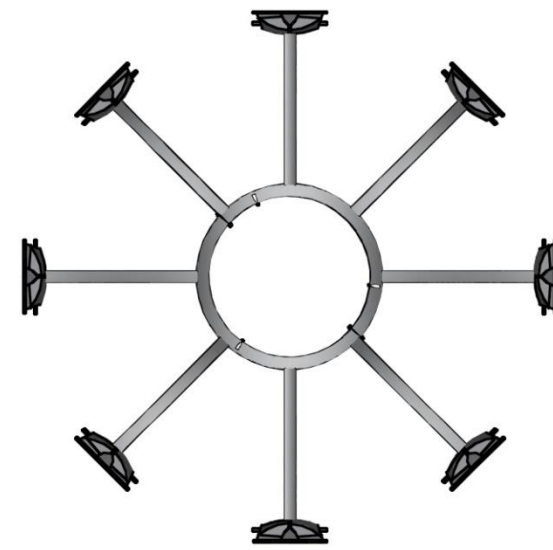
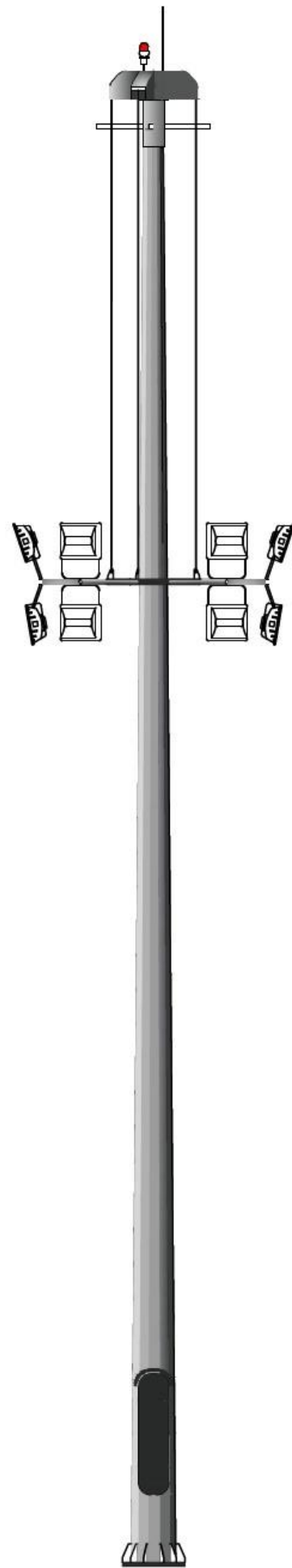
ELECTRO POLES PRODUCTS PVT. LTD.

AN ISO 9001 : 2008 CERTIFIED COMPANY



HIGH MAST POLES

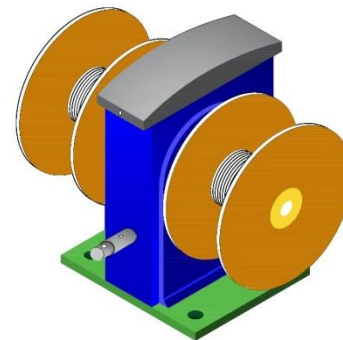
HIGH MAST PARTS



LANTER RING



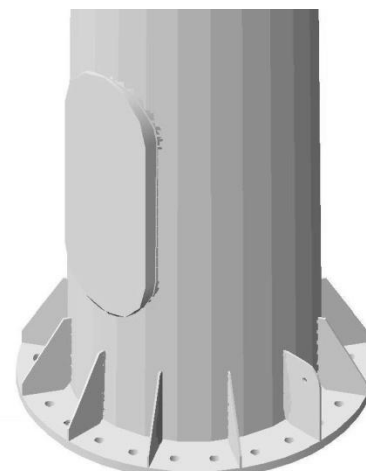
HEAD FRAME



WINCH



FOUNDATION BOLT



MASTBOTTOM

STANDARD SPECIFICATION FOR HIGH MAST AS PER 180 KMPH OR 50 M/S OR 112 MILES/HR.											
Designation of MAST (Heavy)	Mast Height Mtr.	No. Of Section	Section Thickness mm.	Dia(A/F) mm.		Base Plate mm. OD X Thk.	PCD mm.	Foundation Bolt Details			No of Lights
				Top Dia	Bottom Dia			Dia mm.	Length mm.	No of Bolts	
EPHM-12.0	12.0	1	4	150	340	540X20	440	M24	750	6	6
EPHM-12.0	12.0	2	3,3	150	340	540X20	440	M24	750	6	8
EPHM-12.5	12.5	2	3,3	150	360	560X20	460	M24	750	6	6
EPHM-16.0	16.0	2	3,3	150	360	560X20	460	M24	750	8	8
EPHM-16.0	16.0	2	3,4	150	360	560X20	460	M24	750	8	12
EPHM-20.0	20.0	2	3,4	150	410	610X20	510	M24	850	12	8
EPHM-20.0	20.0	2	3,4	150	410	610X20	510	M24	850	12	12
EPHM-20.0	20.0	2	3,4	150	410	610X20	510	M30	1200	10	16
EPHM-25.0	25.0	3	3,4,4	150	410	610X25	510	M30	1200	12	12
EPHM-25.0	25.0	3	3,4,5	150	460	660X25	560	M30	1200	12	16
EPHM030.0	30.0	3	4,4,5	150	560	760X25	660	M32	1200	16	16
EPHM030.0	30.0	3	4,5,5	150	610	810X25	710	M32	1200	20	20

STANDARD SPECIFICATION FOR HIGH MAST AS PER 160 KMPH OR 44 M/S OR 100 MILES/HR.											
Designation of MAST (Medium)	Mast Height Mtr.	No. Of Section	Section Thickness mm.	Dia(A/F) mm.		Base Plate mm. OD X Thk.	PCD mm.	Foundation Bolt Details			No of Lights
				Top Dia	Bottom Dia			Dia mm.	Length mm.	No of Bolts	
EPHM-12.0	12.0	1	4	105	340	540X20	440	M24	750	6	6
EPHM-12.0	12.0	2	3,3	105	340	540X20	440	M24	750	6	8
EPHM-12.5	12.5	2	3,3	105	360	560X20	460	M24	750	6	6
EPHM-16.0	16.0	2	3,3	105	360	560X20	460	M24	750	8	8
EPHM-16.0	16.0	2	3,4	105	360	560X20	460	M24	750	8	12
EPHM-20.0	20.0	2	3,4	150	410	610X20	510	M24	850	12	8
EPHM-20.0	20.0	2	3,4	150	410	610X20	510	M24	850	12	12
EPHM-20.0	20.0	2	3,4	150	410	610X20	510	M30	1200	10	16
EPHM-25.0	25.0	3	3,4,4	150	410	610X25	510	M30	1200	12	12
EPHM-25.0	25.0	3	3,4,5	150	460	660X25	560	M30	1200	12	16
EPHM030.0	30.0	3	4,4,5	150	460	660X25	560	M32	1200	16	16
EPHM030.0	30.0	3	4,5,5	150	510	710X25	610	M32	1200	20	20

STANDARD SPECIFICATION FOR HIGH MAST AS PER 120 KMPH OR 33 M/S OR 75 MILES/HR.											
Designation of MAST (Light)	Mast Height Mtr.	No. Of Section	Section Thickness mm.	Dia(A/F) mm.		Base Plate mm. OD X Thk.	PCD mm.	Foundation Bolt Details			No of Lights
				Top Dia	Bottom Dia			Dia mm.	Length mm.	No of Bolts	
EPHM-12.0	12.0	1	4	105	340	540X20	440	M20	750	6	6
EPHM-12.0	12.0	2	3,3	105	340	540X20	440	M20	750	6	8
EPHM-12.5	12.5	2	3,3	105	360	560X20	460	M20	750	6	6
EPHM-16.0	16.0	2	3,3	105	360	560X20	460	M20	750	8	8
EPHM-16.0	16.0	2	3,4	105	360	560X20	460	M20	750	8	12
EPHM-20.0	20.0	2	3,4	150	410	610X20	510	M24	850	12	8
EPHM-20.0	20.0	2	3,4	150	410	610X20	510	M24	850	12	12
EPHM-20.0	20.0	2	3,4	150	410	610X20	510	M30	1200	10	16
EPHM-25.0	25.0	3	3,4,4	150	410	610X25	510	M30	1200	12	12
EPHM-25.0	25.0	3	3,4,5	150	460	660X25	560	M30	1200	12	16
EPHM030.0	30.0	3	4,4,5	150	460	660X25	560	M30	1200	16	16
EPHM030.0	30.0	3	4,5,5	150	510	710X25	610	M30	1200	20	20

APPLICABLE STANDARDS

Title	Code
General Construction of Steel	IS 875 (PART III) 1987
Wind Load for Structures	IS 800 2007
Grades of Steel	BSEN 10025/ BIS 2062
Foundation Bolt Material	Gr Fe-415 Mpa Min
Base Plate Material	BIS 2062
Galvanizing	IS 4759
Galvanization Thickness	70 - 86 Micron (Approx)
Lantern Carriage capacity	300 Kg to 1000 Kg

ACCESSORIES

Lantern Carriage
Head Frame
Motor & Winch Mounting Bracket
Lightning Arrester
Winch- Double/Single Drum
Stainless Steel Wire Rope
Power Tool
Trailing Cable

APPLICATIONS

1. Air Ports & Sea Ports
2. Railway Yards
3. Industrial Flood Lighting
4. Car Parks & Junctions
5. Sports Arenas/Stadiums
6. Roads & Highway